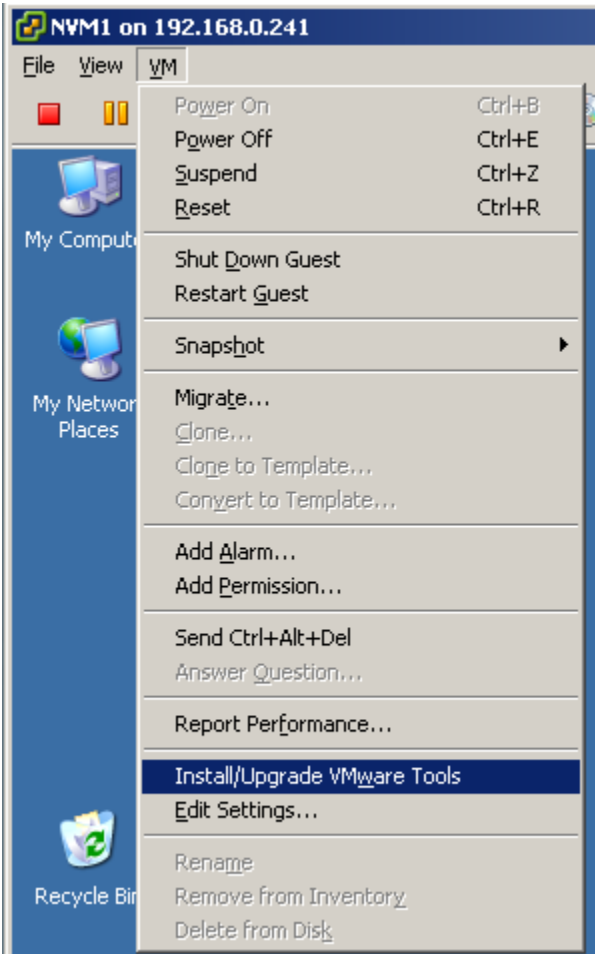
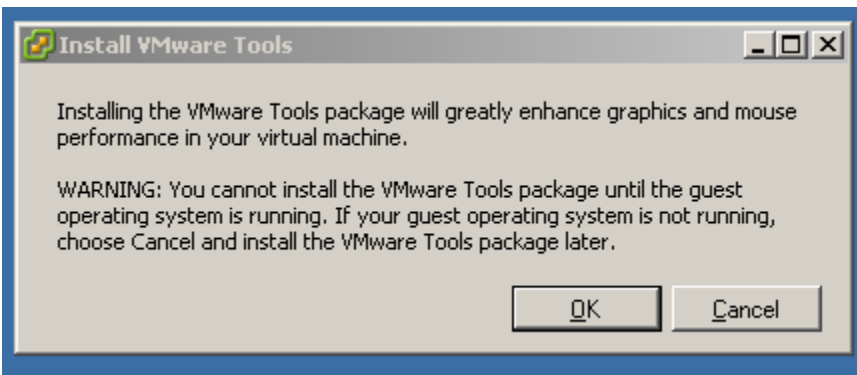


Configuring VMWare Virtual Machines for Use With Melio FS



Before you install Sanbolic's Melio FS on any of the Virtual Machines, VMware tools must be installed first. To do this open a console to the virtual machine from your VMware infrastructure client. Once you are connected and logged into the desktop of the VM, from the top file menu of the console window select VM and then Install/Upgrade VMware Tools.

The following message will be displayed that warns that you must have your guest operating system(s) already running. Click ok.

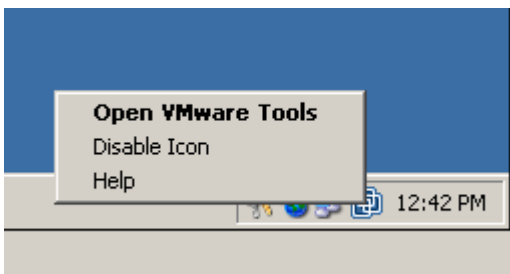


Follow the prompts of the VMWare Installer,

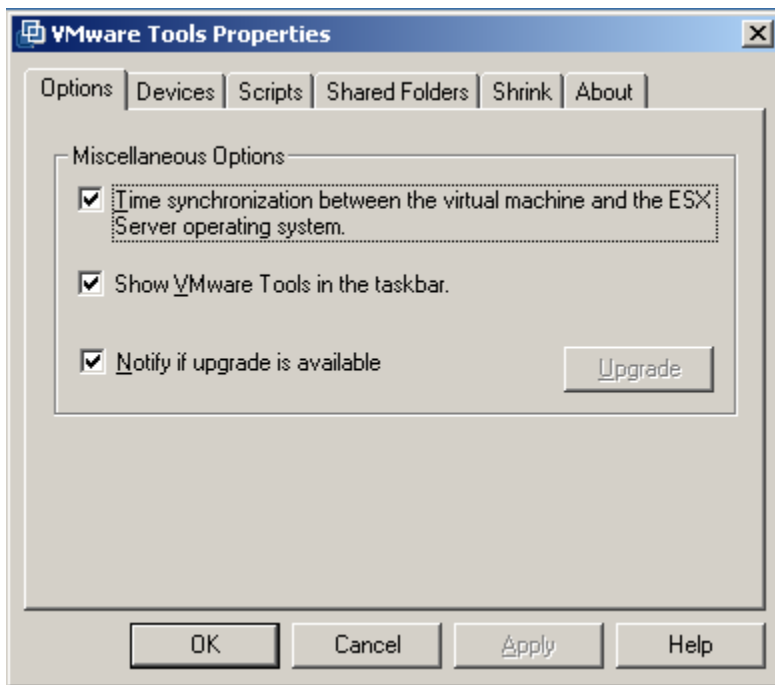


After completing the install, you must restart the virtual machine.

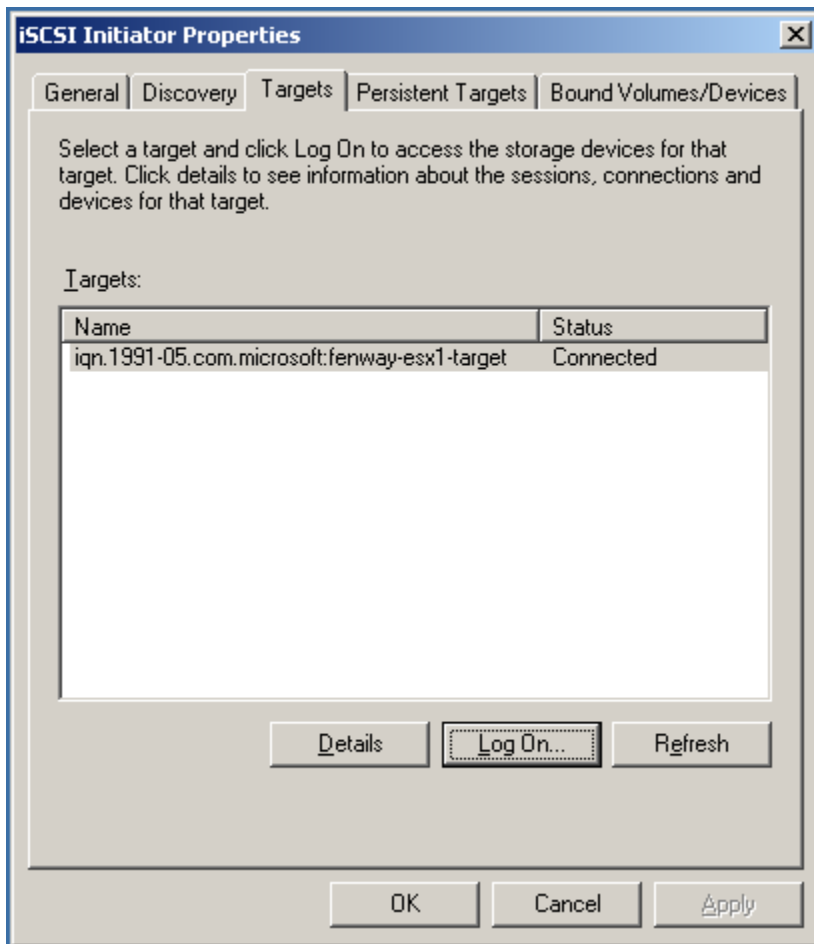
Once the install is completed and you have restarted your virtual machine you will notice a new icon in the system tray. This is the icon for VMware tools. Right click on this icon and select Open VMware Tools.



Check to see if time synchronization is checked, if not check it and then click apply and then restart the VM. Time synchronization must be enabled in order for the virtual machine to function properly with Sanbolic's Melio FS.



Repeat all the above steps for every virtual machine that you want to run MelioFS. Once completed follow the installation guide for MelioFS and install the file system on the virtual machines.



Once VMware tools and MelioFS are installed and configured on all virtual machines you can then connect to your storage device. In this case an iSCSI target. Once connected follow the instructions included with MelioFS.