

**DFS Setup with Melio FS™ and LaScala™  
2008**

**Sanbolic, Inc.**

US Office

Phone: +1 617 833 4240

Fax: +1 617 402 20 29

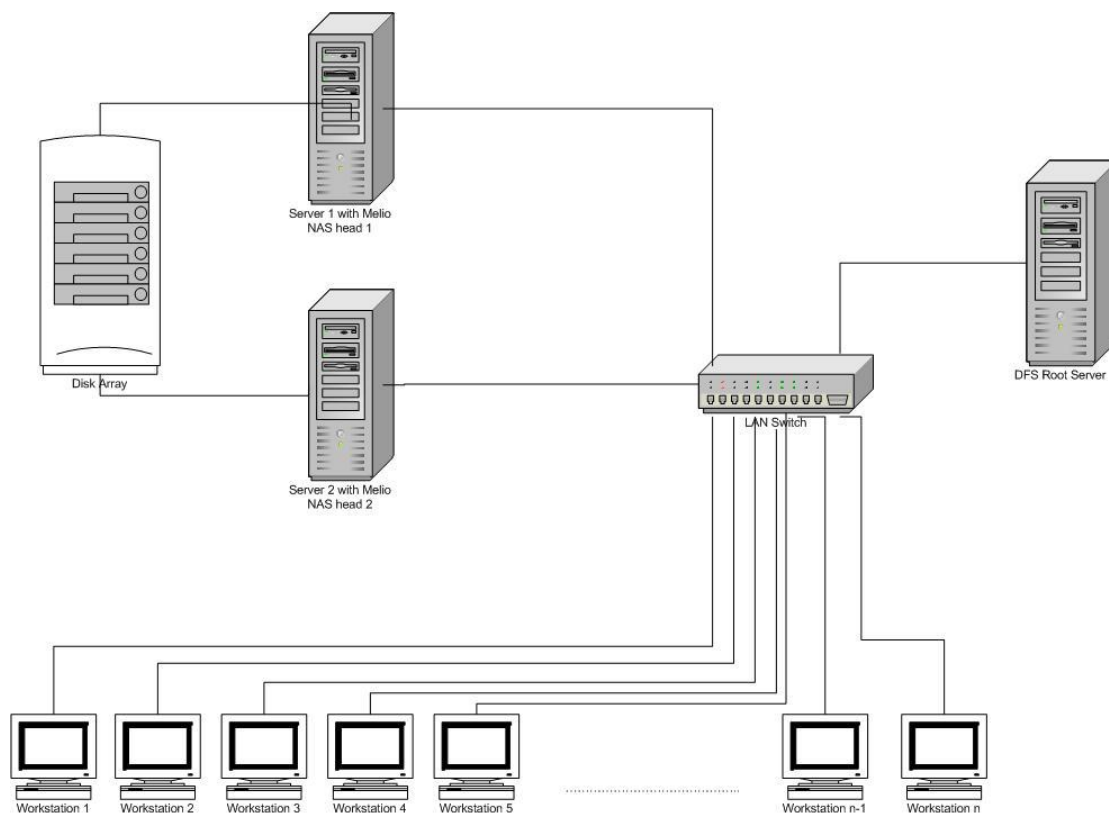
Email: [support@sanbolic.com](mailto:support@sanbolic.com)

URL: [www.sanbolic.com](http://www.sanbolic.com)

Download: <http://clients.sanbolic.com>

Before setting up DFS with Melio FS and LaScala, you need to create a Melio FS formatted volume. Check that the volume is accessible on all SAN connected servers and after that share the Melio FS formatted volume from all servers.

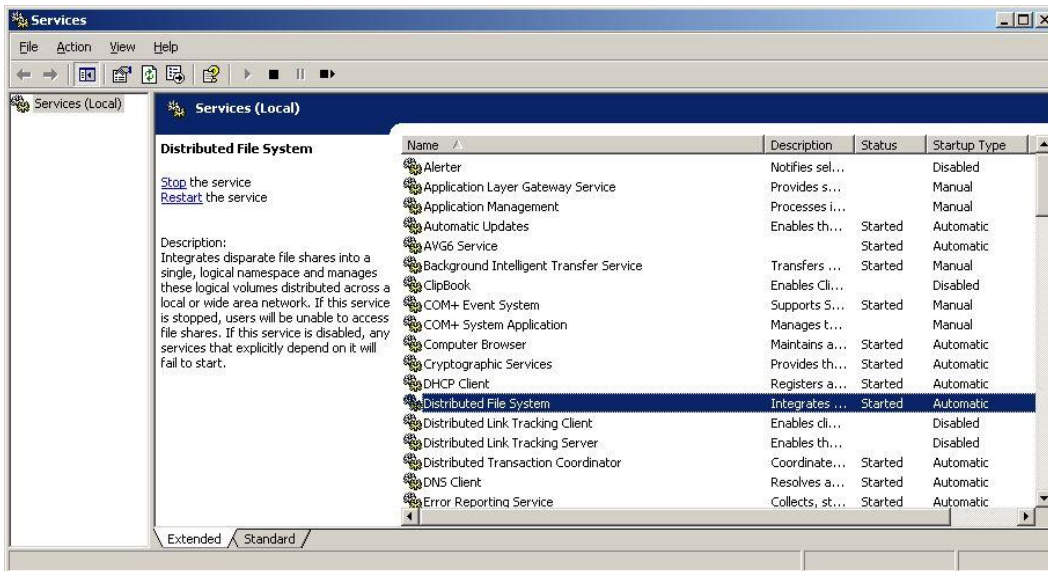
The topology when using DFS over Melio FS and LaScala should resemble the following diagram:



For simplicity, let's suppose that we have 2 servers with Melio FS and LaScala installed. We call them Server1 and Server2. They will be acting like NAS heads and share their Melio FS volumes. Let's say that we have one Melio FS formatted volume, which we want to share. Its drive letter is U: for example. Now we share the U: drives from both stations.

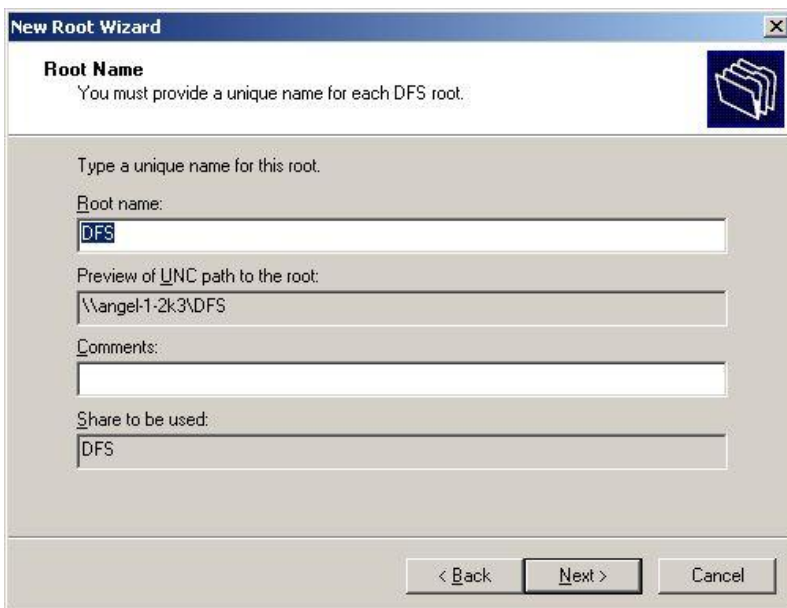
For the purpose of DFS integration with Melio and LaScala, we need a third server, which will act as a DFS root. It must be in the same subnet as Server1 and Server2. It must be running Windows 2003.

Now from the Administrative tools select services and make sure that the Distributed File System service is set to Automatic:

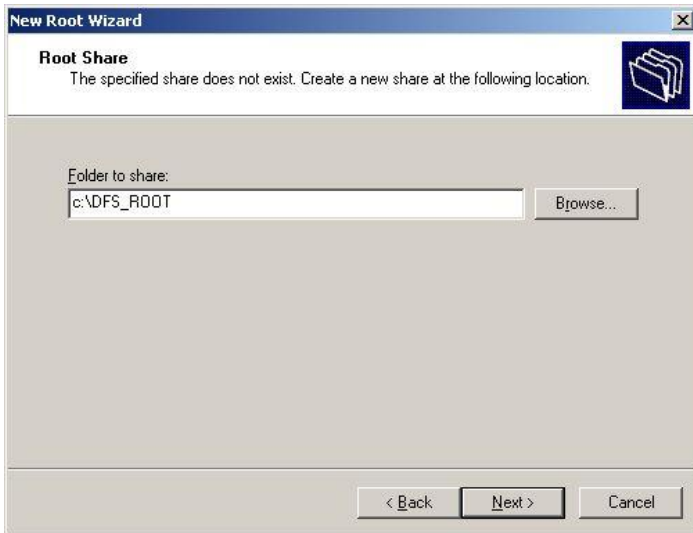


The next step is to Run the New Root Wizard for the Distributed File System. You can do that from Administrative Tools -> Distributed File System:

- a) Select "Standalone root"
- b) Type the NetBIOS name of the server, acting as a DFS root – in our example this is "angel-1-2k3"
- c) Type in the name of the root – this is "DFS"



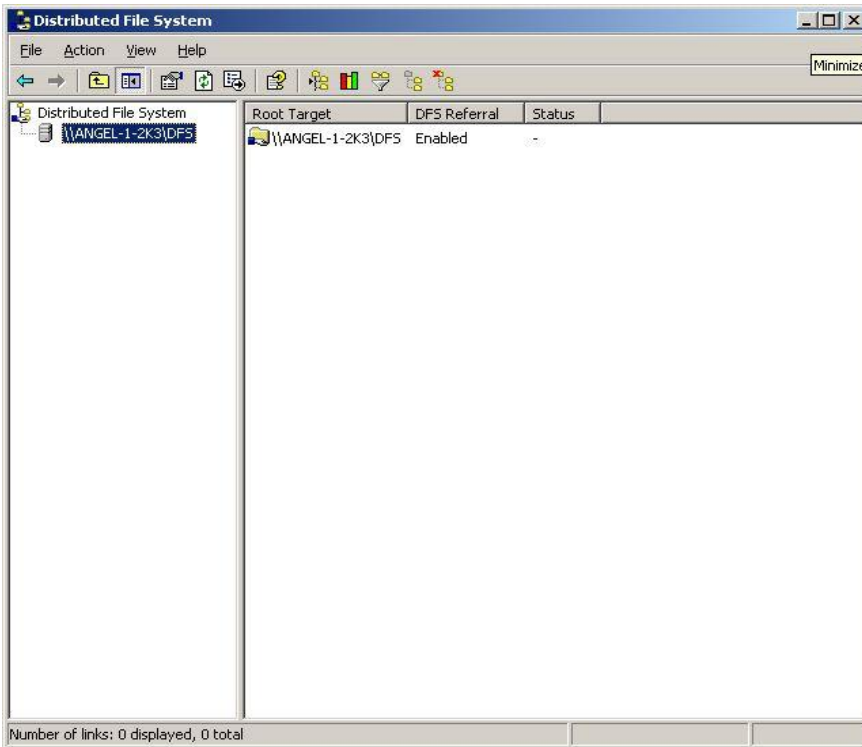
The next step is to select the folder to share on the DFS root server – in our case this is c:\DFS\_ROOT (if the folder doesn't exist, it will be created in the process)



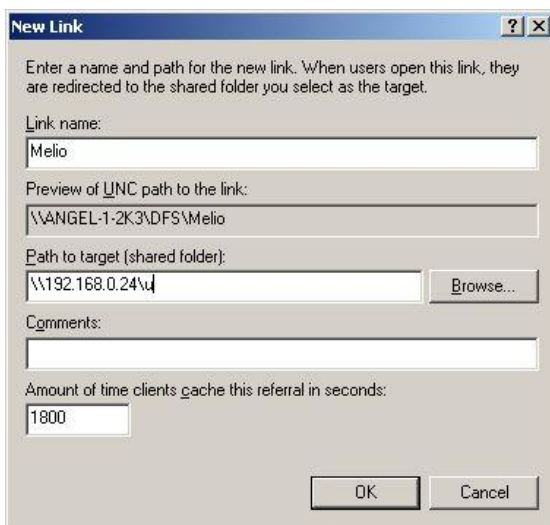
You will see that the New root Wizard has been completed.



Now we need to create a DFS link, which will be visible as a share on the LAN. For this purpose, select the newly created root, and from the Action menu select “New link...”

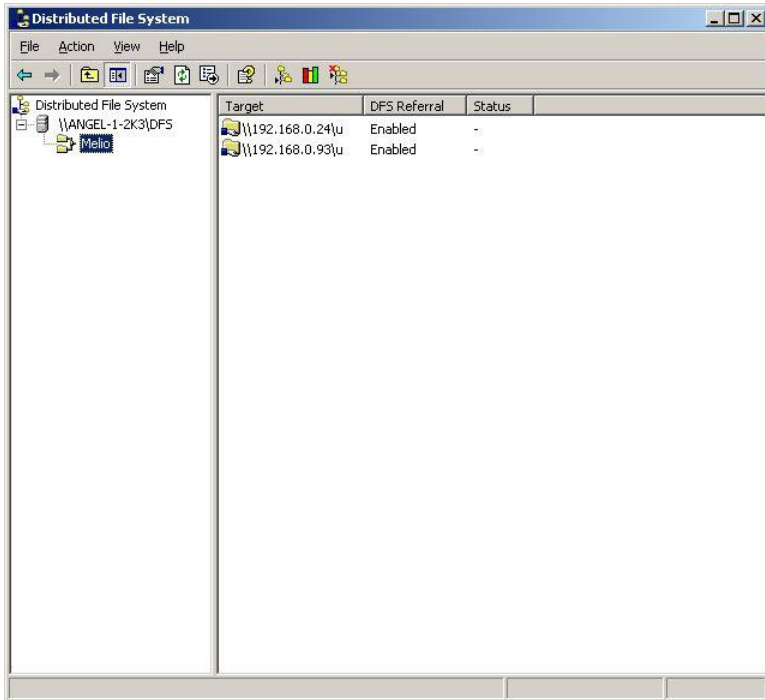
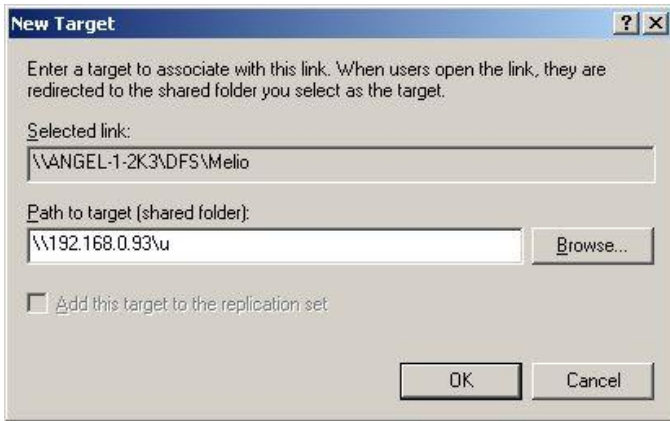


The New Link Windows appears where we must type in the name of the link – in our case that will be “Melio”. In the “Path to target (shared folders)” type [\\192.168.0.24](http://192.168.0.24) (this is the Server1 IP address) and click OK.



Now you came up with a target inside the newly created link, which points to the shared u: drive on Server1.

The last step is to add the other target, and this you can do by right-clicking over the “Melio” link and selecting “New target...”. The following window appears, where you must type in the path to the shared u: drive on Server2 – in our case: [\\192.168.0.93](http://192.168.0.93)



You have finished with the setup of Dfs.

Now (in our example) the workstations that need access to the Melio FS volume, should map the following network drive to a letter: \\angel-1-2k3\DFS\Melio.