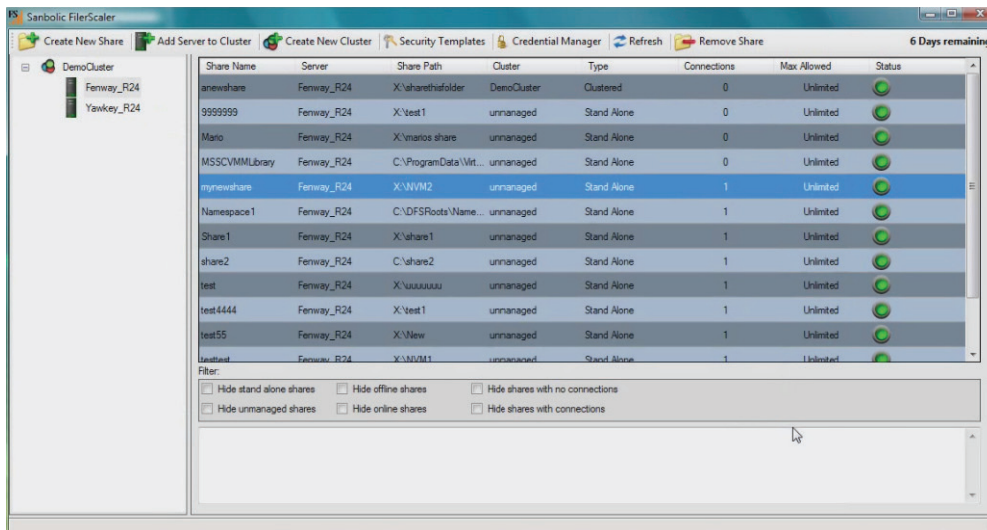
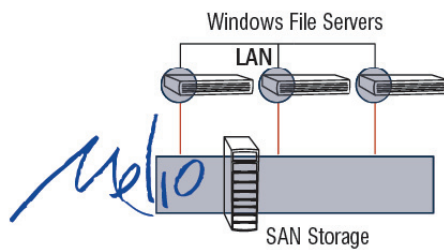


FilerScaler

FilerScaler provides centralized management and provisioning of Windows file shares across the entire enterprise. From a single interface, all existing file shares can be managed, new shares created, and the status of each share can be monitored. Tasks such as setting permissions can be simplified using templates which are incorporated into the FilerScaler management screen. FilerScaler can be used to manage any Windows file server running on Windows 2003, 2008, or 2008 R2.



When the file servers being managed are utilizing Sanbolic's Melio clustered file system and have access to a SAN storage array, FilerScaler allows for the creation of clustered shares across many hosts in an active/active environment. All file servers in the clustered have concurrent read/write access to a single file system residing on a SAN storage volume. This enables Windows file servers to be used to create a large, highly available, modularly scalable file serving solution. This provides the opportunity to consolidate Windows File Shares onto a flexible Windows-based platform instead of migrating to a proprietary appliance.



Benefits of clustered active-active file services solution using FilerScaler and Melio FS with industry standard server and SAN storage hardware:

- All servers have access to the same volume
- All file servers are easily provisioned and managed from the AppCluster console
- Since all servers have shared access to the same volume, data is consistent across all servers
- No need for replication resulting in good storage utilization and no performance impact
- When user load increases additional servers can be added on the fly
- Support for Large Numbers of FileServers in a cluster
 - Can support 100's of nodes in a single cluster limited only by hardware
- No hardware failover required
 - All servers have active-active access to the file system
- No dependency on Windows Failover Clustering
- Easy installation
 - Simple next-next-next installation and configuration
 - Clustered file services environments can be set up in minutes
- Storage and server hardware agnostic
 - Supports mixed OS and server hardware environments
- Both Physical and virtual machines are supported
 - Virtual and physical machines can be mixed in the same cluster
- Ability to scale number of nodes and storage dynamically on the fly with active I/O present
- Support for Microsoft DFS, without the need for replication (DFS-R), as well as Microsoft NLB clusters, and 3rd party network load balancers
- Support for Native Windows ACL's

Evaluation software and a video demonstration of the solution is available at sanbolic.com



Sanbolic Inc.

304 Pleasant Street, 2nd Floor, Watertown, MA 02472

phone: 617 833 4249, **fax:** 617 926 2808, **url:** www.sanbolic.com, **email:** sales@sanbolic.com