



## ***Simple Information Lifecycle Manager (SILM)***

SANBOLIC WHITE PAPER

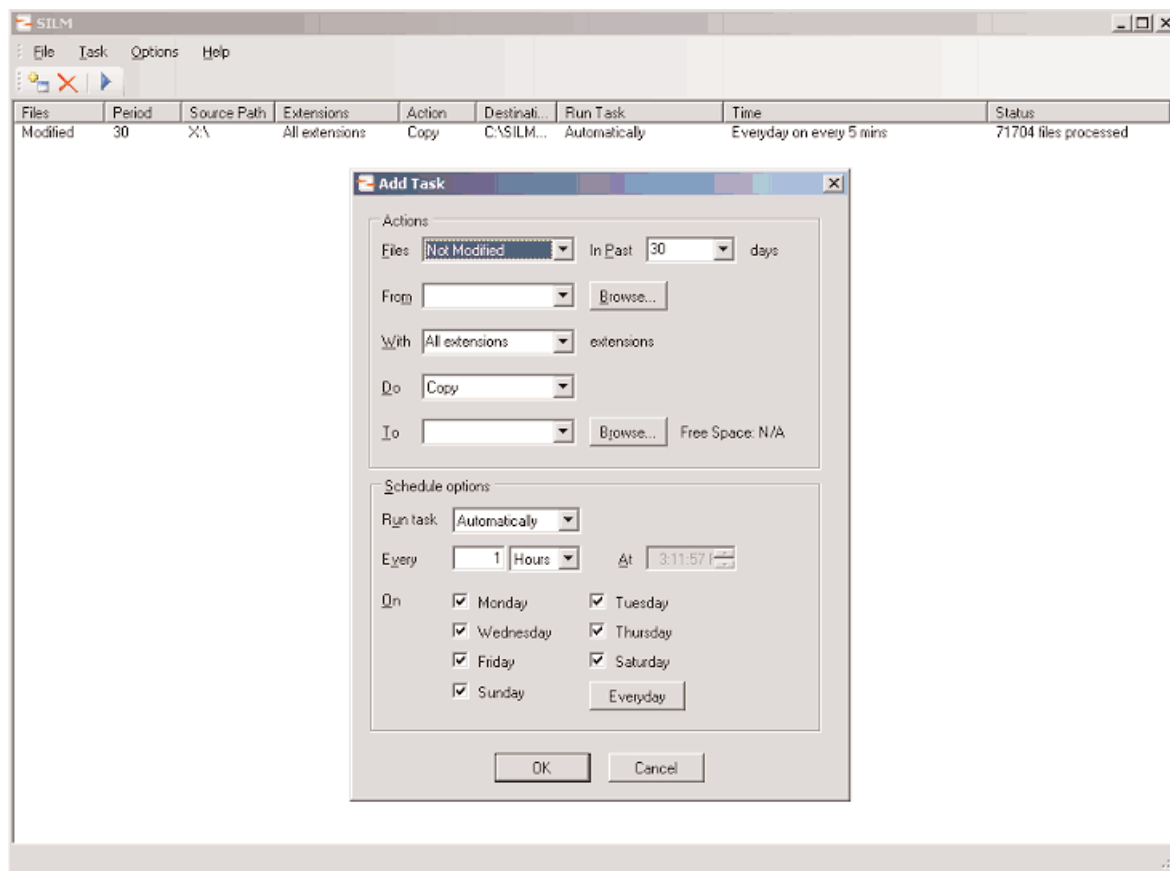


[www.sanbolic.com](http://www.sanbolic.com)

## Overview

Sanbolic's Simple Information Lifecycle Manager (SILM) is a software product for all Microsoft Windows platforms that allows files or volumes to be easily migrated or copied from one volume to any other volume or network share that the server or workstation has access to. Storage users can define policies to periodically migrate or copy data based on file type, creation date, date last accessed, and other attributes.

SILM's universal connectivity support allows users to deploy it in a mixed storage environment and simultaneously use it across DAS (direct attached storage), NAS (network attached storage), SAN (storage area network) and removable media, as well as different interfaces such as FC, SCSI, iSCSI, SATA, PATA, and Solid State Disk. When used in conjunction with a clustered files system, such as Sanbolic's Melio FS, SILM allows data to be consolidated onto a single shared volume for access or backup purposes. Users can easily provision SILM to automatically maintain rules of what kind of files reside on each type of storage.



The intuitive GUI for SILM allows users to select the files or file types to migrate or copy, the frequency with which SILM migrates or copies data for recurring data movement, as well as email addresses to which notifications will be sent. Multiple data movement policies can be established, which then execute automatically at the user defined interval.

## Use Cases

Typical examples where automatic policy-based data movement can be used:

- Move old or unused files off of expensive, high performance storage onto lower cost storage hardware.
- Storage hardware upgrades or lease exchanges where data must be migrated onto new storage arrays. SILM is able to minimize the down time dramatically.
- Copy files with very frequent access onto additional arrays for availability
- Consolidate files onto a single disk for backup, or directly copy files onto near-line storage in disk-to-disk backup environments. With many backup tools it is important to have a separate copy of the files which are due for a back-up operation in a file sharing environment where files are being modified by multiple sources. SILM can execute data gathering and pre staging of the data in to a “back-up folder” prior to initiating a back-up.

## SILM Features

SILM is a software only product and it is hardware independent, thus allowing customers to select the hardware platform best suited for their needs. In addition SILM resides a layer above industry standard storage management tools and takes full advantage of their capabilities and is fully compatible with these tools.

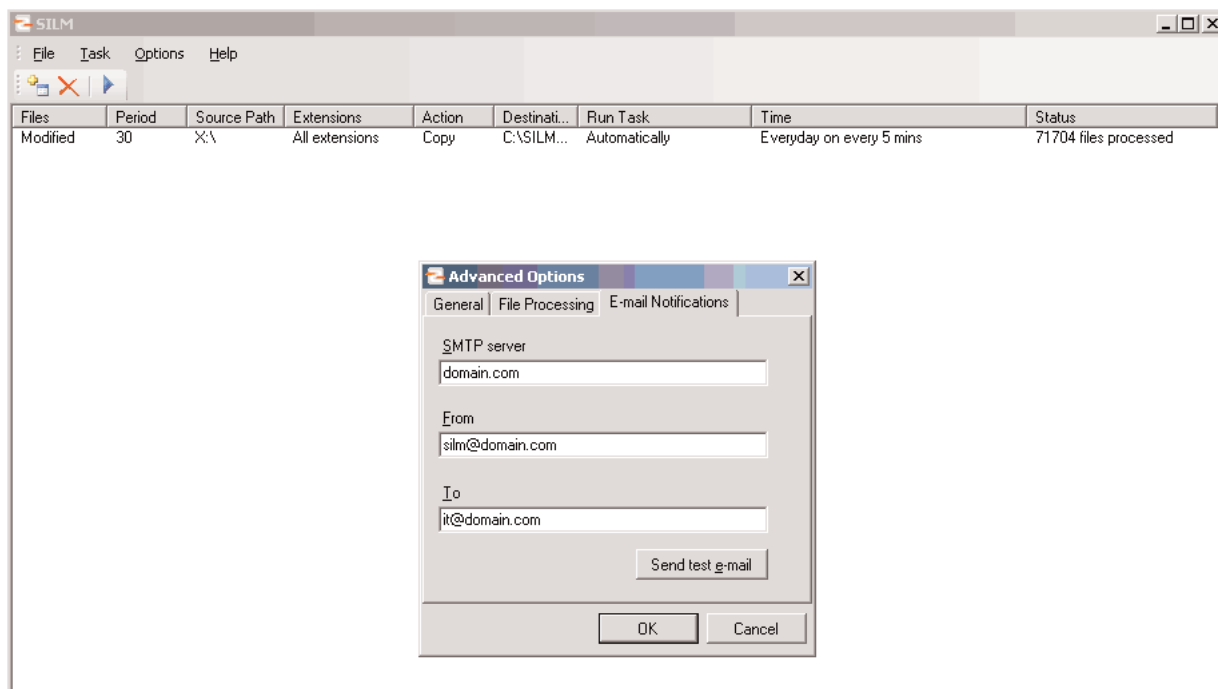
SILM is specifically designed for operation in shared file environment so all data movements are on file level and SILM does not operate as a “filter driver”, an approach commonly found in other data mover software products. This is a significant distinction and advantage for users in a shared (block mode) file SAN environment where multiple machines have concurrent read and write access to the same volume and file in conjunction with products like Sanbolic’s shared clustered Melio file system and LaScala shared clustered volume manager.

SILM allows users to have active applications on the data that is currently being migrated or copied.<sup>1</sup> In addition SILM incorporates advanced data verification methods that work in conjunction with the journaling capability of file systems such as Melio FS in order to insure data integrity. Users can utilize SILM to define rules for data location and movement between different storage types as part of information lifecycle management SILM can also be used for their Disk to Disk back up from SAN, NAS, DAS, or even a system hard drive to a separate location.

SILM operates in conjunction with the native Microsoft Windows cache management and fully utilizes hyper threading & multiprocessor environments. The utilization of these existing and proven technologies is a key factor in achieving high performance without causing additional CPU overhead and consuming additional memory.

SILM’s GUI provides user-definable administrative options for provisioning the policies for data movement. Users can create a task by defining file source and destination, file types & extensions, file access profiles, and type of operation, such as copy or move. Advanced scheduling of tasks, including recurring back-ups and data movements, can be pre-defined and scheduled by both administrators and users.

<sup>1</sup> For applications without exclusive locks



SILM will provide email notification of which files have been moved, as well as any exceptions.

In order to meet the demands of the dynamic IT departments and infrastructure users can also define persistent bindings to drive letters.

## Summary

SILM is a very cost effective and easy to use software product that provides users with the ability to define policies for moving or copying files across a wide range of storage types. SILM can create file copies for back up or availability, consolidate files onto a single storage volume, migrate files when provisioning new storage, and maintain information lifecycle policies for file placement based on file type or access profiles. SILM can move data among local drives, SAN storage, and NAS storage. SILM supports enhanced back up and lifecycle management capability when used in a shared data environment with a clustered file system such as Melio FS.

### About Sanbolic, Inc.

Sanbolic, Inc is a Watertown, Massachusetts-based company that provides software for sharing and simplifying shared SAN storage environments. Sanbolic's shared data SAN solutions extend the capability of Windows Servers and Workstations that utilize SAN storage. These solutions provide important economic and functional benefits for Windows datacenter applications as well as for video, imaging, and streaming applications. Further information about Sanbolic can be found on its website [www.sanbolic.com](http://www.sanbolic.com).

Sanbolic Inc.  
 304 Pleasant Street, 2nd Floor  
 Watertown, MA 02472  
 phone: +1 617 833 4249  
 fax: +1 617 926 2808  
 url: [www.sanbolic.com](http://www.sanbolic.com)  
 email: [sales@sanbolic.com](mailto:sales@sanbolic.com)